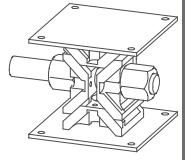


8

8. HEAVY-DUTY WEDGE JACK and accessories



ENGINEERING AND FALSEWORK CONSTRUCTION

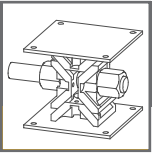


ROBUSTA
GAUKEL

8

HEAVY-DUTTY WEDGE JACK AND ACCESSORIES

GENERAL INFORMATION



Your benefits at a glance:

- For supporting and lowering great loads with soffit scaffolding and steel work
- 2 types for loads of 420 kN and 1000 kN
- Robust, rugged design
- Less expensive and simpler than hydraulic systems
- Height can be adjusted precisely and settling computed
- Test reports guarantee load-bearing capacities
- Head and base plate can be welded
- Is not affected by water
- With type approval

Wedge jacks are optimized to support and lower steel beams, scaffolding constructions, concrete prefab girders, concrete plates etc.

With the wedges it is also possible to lift and adjust loads up to 40 kN.

The wedge jacks have proved themselves on many sites as a support for falsework, steel structures and crossbars.

After the supported construction is completed and self-supporting, the supporting members are made load free by lowering the wedge jack. Subsequently an easy dismantling of the members is possible.

For lowering the wedge just rotate the lateral hexagon nut, thus the two lateral wedges are moved outwards inevitably by the imposed load and the height of the wedge jack is being reduced.

Please watch out carefully that the hexagon nut can be reached without obstacles and that there is enough space to turn the free wheel wrench.

The wedge jack must be placed stabilized upon solid ground.

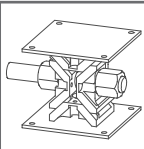
Before imposing the load please take care that the preliminary height is correctly adjusted to make sure that there will be enough shrinkage in vertical lowering height for the dismantling works. When determining the shrinkage of the lowering height you have to consider the own deflection of the supported construction. The wedge jack works as a pin-ended support, that means the supporting construction must be stabilized and fixed immovable in lateral direction!

Within a certain limit the wedge jack is also capable of handling eccentric loads and horizontal forces.

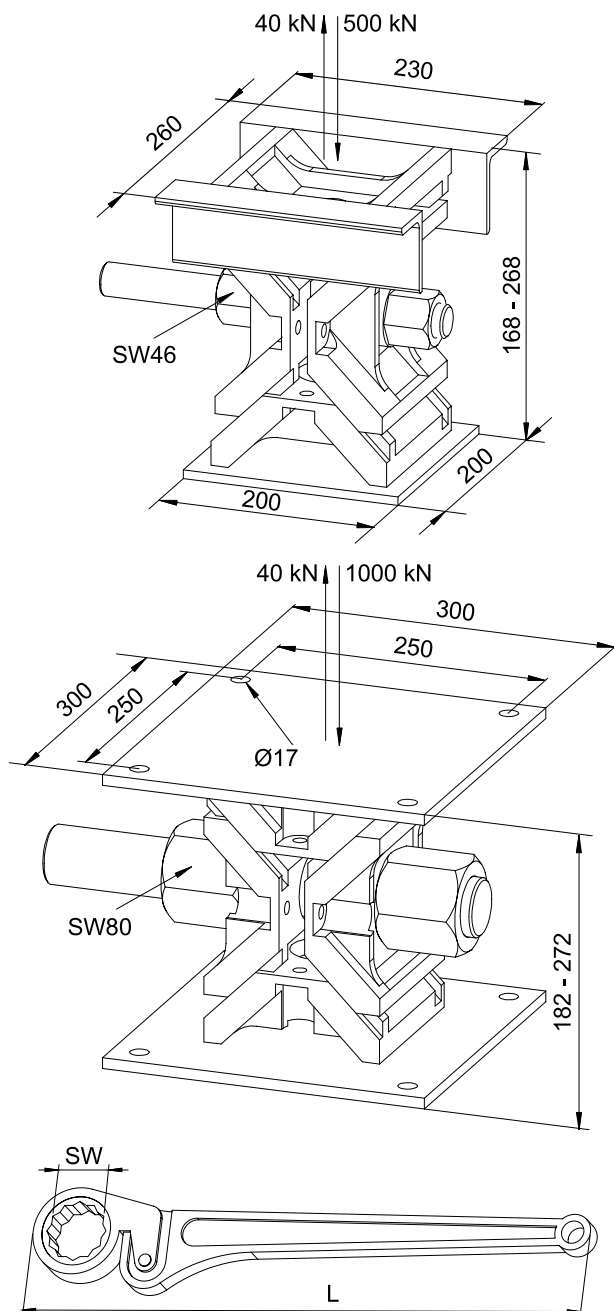
Basically the use has to be planned carefully regarding the circumstances in every special application.

Therefore we supply on request a detailed manual for erection and using.





TECHNICAL DATA:



Wedge jacks, 2 sizes

Sizes [mm]	Adm. load [kN]	Weight [kg/unit]	Item No.
230 x 260	420	32.0	831050
300 x 300	1000	50.0	832010

Free wheel ratchet for wedge jacks

Type [kN]	Double hex. insert	Length [mm]	Weight [kg/unit]	Item No.
420	SW 46	625	2.90	831046
1000	SW 80	1000	8.00	832080

Power wrench deliverable on request



Example:
Manual nut-runner with stepdown gearing for easy unscrewing of the loaded hexagonal nut



ROBUSTA-GAUKEL GMBH & CO. KG

Headquarter:

Brunnenstraße 36
D-71263 Weil der Stadt-Hausen
Phone: +49 70 33 537 10
Fax: +49 70 33 5371 31
Internet www.robusta-gaukel.com
E-Mail info@robusta-gaukel.com

Berlin office:

Rohdestraße 19
D-12099 Berlin (Tempelhof)
Phone: +49 30 75 70 70 00
Fax: +49 30 75 70 70 07
Internet www.robusta-gaukel.com
E-Mail nl-berlin@robusta-gaukel.com